

WinFrog Device Group:	Sounder
Device Name/Model:	Simrad EA500
Device Manufacturer:	Kongsberg Simrad Mesotech Ltd. 1598 Kebet Way, Port Coquitlam, B.C. Canada, V3C 5M5 Tel: (604) 464-8144 Fax: (604) 941-5423 Kongsberg Simrad AS Postboks 483 3601 Kongsberg E-mail: sales.marketing@kongsberg-simrad.com Tel: 32 28 50 00 Fax : 32 73 59 87 http://www.simrad.ca/
Device Data String(s) Output to WinFrog:	Simrad proprietary message: D#(identifier), time tag (hh:mm:ss.ss), depth (m), bottom surface back scattering strength (dB), along ship bottom slope(degrees), athwart ship bottom slope (degrees). <i>Note: The identifier number is insignificant, as only one transducer should be interfaced.</i>
WinFrog Data String(s) Output to Device:	Standard NMEA GGA and VTG messages
WinFrog .raw Data Record Type(s):	Depth: Type 411: depth, status & dtime are repeated 15 times

DEVICE DESCRIPTION:

The Simrad EA500 is a triple channel (triple frequency) hydrographic echo sounder that can incorporate single beam, split beam and side looking transducers. The split beam transducers are capable of measuring true inclination angles of the seabed in athwartships direction. The EA 500 outputs separate digitized depths for each channel.

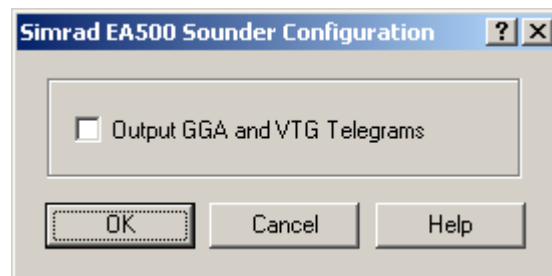
The Simrad EA500 device can be used for single frequency operation. If the EA500 is used in multiple frequency mode, you must utilize WinFrog's Simrad EA500 DF device driver instead. Refer to the documentation on the Simrad EA500 DF for information on using the EA500 in multiple frequency mode.

DEVICE CONFIGURATION INSTRUCTIONS:

Baud Rate: Configurable
Data Bits: Configurable
Stop Bits: Configurable
Parity: Configurable
Suggested Configuration: 9600-8-N-1

WINFROG I/O DEVICES > CONFIG OPTIONS:

The Simrad EA500 is added to WinFrog from the SOUNDER device category. Configuration for this device allows for the output of NMEA GGA and VTG messages to be sent back to the EA500 sounder. Output is enabled by selecting the Output GGA and VTG Telegrams checkbox in the Simrad EA500 Sounder Configuration dialog shown below.



WINFROG VEHICLE - DEVICE > EDIT OPTIONS:

Adding the Simrad EA-500 sounder to WinFrog creates a BOTTOMDEPTH data item that must be added to the appropriate vehicle's device list. Once the BOTTOMDEPTH data item has been added to a vehicle's device list, it must be edited to suit the application.

In the vehicle's device list, highlight the SOUNDER, SIMRAD EA-500, BOTTOMDEPTH data item and click the Edit button. The standard **Configure Sounder** dialog box appears. See documentation on the NMEA DEPTH Sounder device for more information on configuring this dialog box.

CONFIGURATION DETAILS:

Refer to documentation on the Simrad EA500 DF for details on the EA500's serial ports, features and specifications.